



PACKAGED AUTOMATIC BOILER FEEDWATER RETURN SYSTEM

For Steam Boilers 1-1/2 to 300 HP, 15 to 250 PSI

THE PARKER DESIGN

The Parker Automatic Return System provides a quality, heavy duty packaged unit fully assembled and ready to install. The system consists of a durable tank with automatic water make-up valve, suction stop valve, strainer, discharge check valve and heavy duty boiler feed pump with motor.

ADVANTAGES

Float valve above top of tank with air gap eliminates expensive backflow device.

Heavy 3/16" thick steel tank with protective coating and painted with a durable, baked enamel finish. (1/4" construction optional)

Adequate storage capacity and convenient openings for easy installation.

Mounted and assembled with complete trim for easy, inexpensive installation.

Solid heavy steel, all welded construction and frame for extra strength and protection against vibration.

Automatic float valve assembly, accessible and adjustable.

Tank is easy to clean and provides convenient drain and clean out openings.

Heavy duty pumps with mechanical seal eliminate troublesome leakage and packing and provide reliable and long life service.

Return Systems R7 to R10

70 to 300 HP



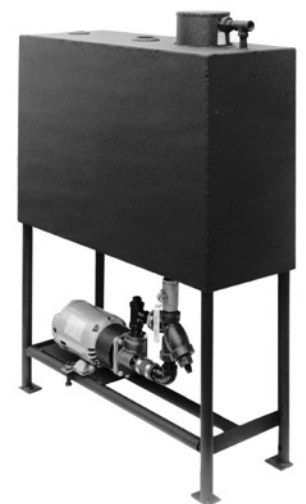
Return Systems R5 and R6

30 to 50 HP



Return Systems R1 to R4

1-1/2 to 25 HP



Burks Turbine Pumps feature external impeller adjustment without disturbing piping, disassembling piping or replacing parts. Gives up to 40% longer service life than turbine pumps of other designs.

Return Systems for boilers 70 to 150 HP furnished with dual pumps each of sufficient capacity to supply the required feed water to the boiler.

Optional models available with nonelectric feedwater pre-heater, electric water fill system, motor starters, disconnects, anodes, stainless steel, 1/4" thick carbon steel pump relief valve, Grund-

fos Multistage Centrifugal, and MTH turbine pumps and electrical panels.

The return system is standardly recommended with high pressure steam boilers to supply water with a boiler feed pump that operates on demand from the boiler water level control.

The tank provides storage for water make-up and return condensate from the system when available with the advantage of pre-heated water. The tank is also used for convenience of feeding water treatment to the boiler.

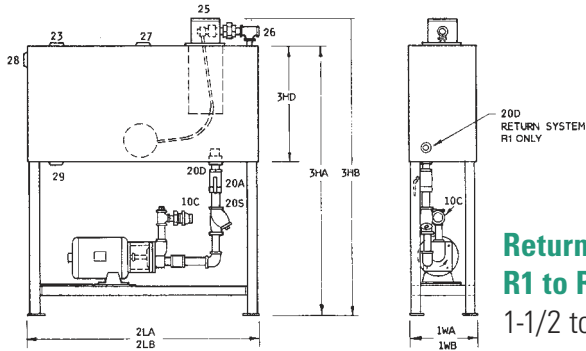
PARKER BOILER CO.
5930 Bandini Boulevard
Los Angeles, CA 90040
Tel (323) 727-9800
Fax (323) 722-2848
www.parkerboiler.com
BROCHURE 106 0L5

"Never a Compromise for Quality or Safety"



PACKAGED AUTOMATIC BOILER FEEDWATER RETURN SYSTEM

For Steam Boilers 1-1/2 to 300 HP, 15 to 250 PSI

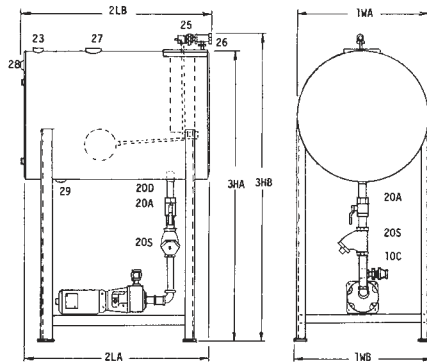


Return Systems R1 to R4

1-1/2 to 25 HP

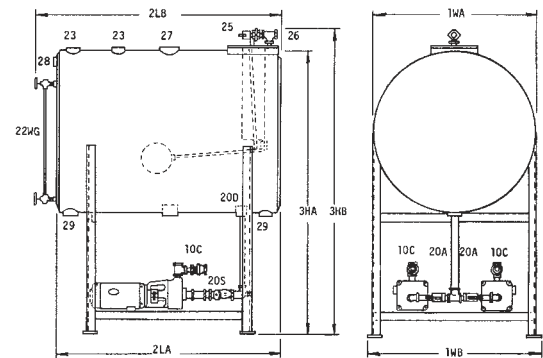
Return Systems R7 to R10

70 to 300 HP



Return Systems R5 and R6

30 to 50 HP



NO.	ITEM	HP	RETURN SYSTEM NUMBER							
			R1	R3	R4	R5-6	R7	R8	R9	R10
	BOILER SIZE, MAXIMUM	HP	3 HP	16 HP	25 HP	50 HP	70 HP	100 HP	150 HP	300 HP
	TANK MODEL		ORR1020	ORR1036	ORR1336	WRH3036	WRH3648	WRH3660	WRH4260	WRH4896
1WA	WIDTH	IN.	10	10	13	30	36	36	42	48
1WB	WIDTH OVERALL	IN.	10	10	13	32	38	38	44	50
2LA	LENGTH	IN.	20	36	36	36	48	60	60	96
2LB	LENGTH OVERALL	IN.	28	36	36	38	53	65	65	101
3HA	HEIGHT	IN.	35	42	46	58	63	63	69	72
3HB	HEIGHT OVERALL	IN.	38	45	49	62	67	67	73	76
3HD	DEPTH	IN.	12	18	24					
10C	DISCHARGE CHECK VALVE	IN.	1/2	3/4	3/4	1	(2) 1	(2) 1	(2) 1-1/4	
20	SUCT. STOP VALVE & STRAINER	IN.	1	1	1	1-1/4*	(2) 1-1/4*	(2) 1-1/4*	(2) 1-1/2	
20D	TANK PUMP CONNECTION	IN.	1	1	1	2	(2) 2	(2) 2	(2) 2	(4) 2
22WG	WATER GAUGE GLASS (1/2" FIXTURES)	IN.	NF	NF	NF	NF	5/8 X 24	5/8 X 24	5/8 X 24	5/8 X 30
23	CONDENSATE RETURN	IN.	3/4	1-1/2	1-1/2	2	(2) 2	(2) 2	(2) 2	(2) 2
25	FLOAT VALVE	IN.	1/2	1/2	1/2	3/4	3/4	3/4	1	1
26	WATER INLET	IN.	1/2	1/2	1/2	3/4	3/4	3/4	1	1
27	VENT OUTLET	IN.	1-1/2	2	2	2-1/2	3	3	3	3
28	RETURN TANK OVERFLOW	IN.	1	1	1-1/4	1-1/4	1-1/4	2	2	2
29	RETURN TANK DRAIN	IN.	1-1/2	1-1/2	1-1/2	1-1/2	(2) 2	(2) 2	(2) 2	(2) 2
	FULL TANK WATER CAPACITY	GAL.	11	28	49	110	211	264	360	750
	WEIGHT-LESS PUMP & FIT. APRX.	LBS.	87	160	210	365	580	660	815	1325
	WEIGHT-WITH PUMP & FIT. APRX.	LBS.	132	205	265	440	710	790	1000	1695
	CRATED SHIPPING WEIGHT APRX.	LBS.	185	290	355	540	850	940	1250	2000

* 1 1/2" SIZE FURNISHED WITH 5G5-1.25TI CENTRIFUGAL PUMP

106 Feedwater Return Steam Boilers 1-1/2 - 300 HP



"Never a Compromise for Quality or Safety"

PARKER BOILER CO.
5930 Bandini Boulevard
Los Angeles, CA 90040
Tel (323) 727-9800
Fax (323) 722-2848
www.parkerboiler.com

BROCHURE 106 0L5