

# RUSSELL PUMP

## Series CVA Condensate Return Systems



All units are sized 3x the condensing rate  
Made in USA

### STANDARD FEATURES

**RECEIVER TANKS** – 304 stainless steel construction for lifetime service  
– Available in 10, 24, 44, 70 and 100 gallon sizes  
– All tanks have studs on the top to allow for the mounting of a customer supplied control panel  
– Vented tanks are designed for gravity return systems

**MOTORS**  
– TEFC three phase 3500 RPM NEMA motors are standard. They utilize dual deep groove ball bearings and a stainless steel shaft.  
– ODP single phase 3500 RPM motors are standard from 1/3 HP thru 2HP. They are rated 115/208-330 Volt 60HZ.  
– 3HP is 230 Volt only. All single phase motors have built-in overload protection  
– Three phase motors are 208-230/460 Volt 60HZ. All three phase motors must be installed with a magnetic starter which provides overload protection

### PUMPS

– Vertical flange-mounted pumps are investment cast 304 stainless steel fitted with mechanical seal rated to 300°F  
– Each pump utilizes a vented and flushed seal area  
– The hydraulic design allows for non-overloading performance at the listed ratings  
– Pumps are fitted with investment cast 304 stainless steel impellers or silicone bronze for smooth, quiet operation  
– All pumps utilize a back pull-out design which allows for servicing without disturbing piping

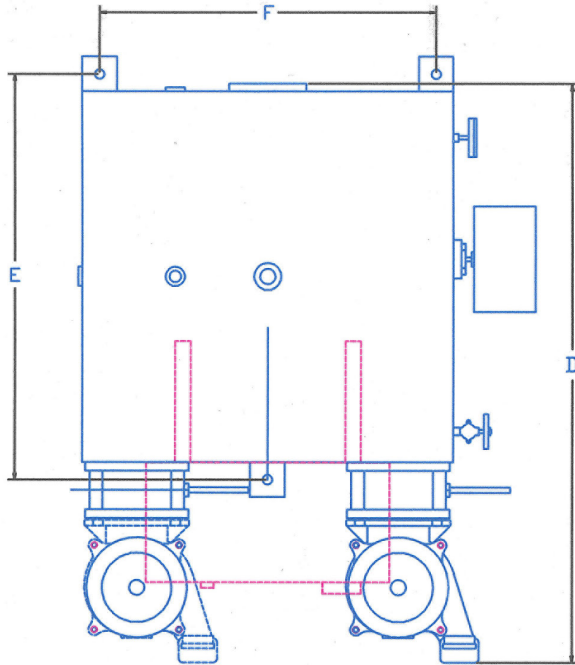
### OPTIONAL FEATURES

- \* Basket Strainers
- \* Y Strainers
- \* Suction isolation valves
- \* X-Proof motor enclosures
- \* Various mechanical seal upgrades
- \* Control Panel
- \* Dial Thermometer with brass well
- \* Gauge Glass
- \* Pressure Gauge with shut-off valves

Russell Pump and Engineering Inc.  
102 W. Chicago Street • Albion, IA 50005  
641-488-2319  
[www.Russellpump.com](http://www.Russellpump.com)

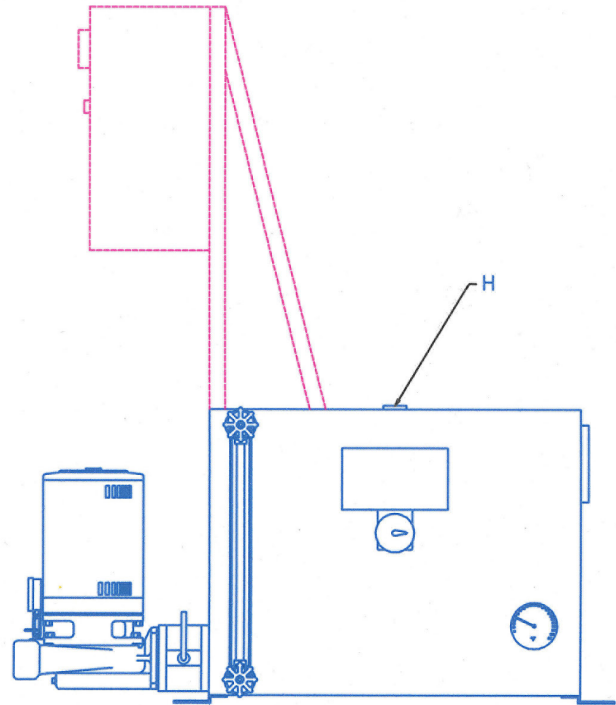
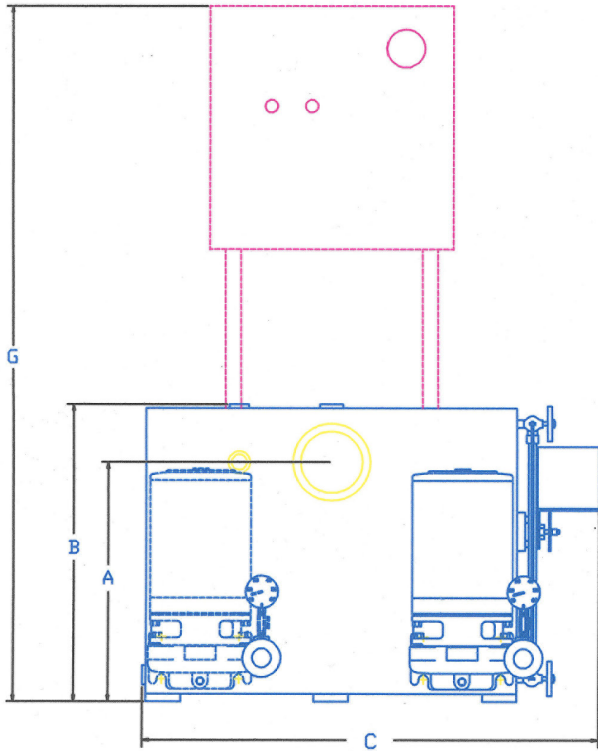
EDR Sq. Feet	Pump Capacity GPM	Disch. Press. PSIG	Motor HP 3450 RPM	Phase	Disch. Size	Simplex Catalog	Duplex Catalog	Receiver Size	Inlet Size	Inlet Height
1,000 thru 6,000	9	10	1/3	1	1-1/4"	610CVAS1	610CVAD1	10	2"	9"
		10	1/3	3		610CVAS3	610CVAD3			
		20	1/3	1		620CVAS1	620CVAD1			
		20	1/3	3		620CVAS3	620CVAD3			
		30	1/2	1		630CVAS1	630CVAD1			
		30	1/2	3		630CVAS3	630CVAD3			
		40	3/4	1		640CVAS1	640CVAD1			
		40	3/4	3		640CVAS3	640CVAD3			
10,000	15	10	1/3	1	1-1/4"	1010CVAS1	1010CVAD1	24	4"	15-1/2"
		10	1/3	3		1010CVAS3	1010CVAD3			
		20	1/3	1		1020CVAS1	1020CVAD1			
		20	1/3	3		1020CVAS3	1020CVAD3			
		30	1/2	1		1030CVAS1	1030CVAD1			
		30	1/2	3		1030CVAS3	1030CVAD3			
		40	1	1		1040CVAS1	1040CVAD1			
		40	1	3		1040CVAS3	1040CVAD3			
15,000	22-1/2	10	1/3	1	1-1/4"	1510CVAS1	1510CVAD1	24	4"	15-1/2"
		10	1/3	3		1510CVAS3	1510CVAD3			
		20	1/2	1		1520CVAS1	1520CVAD1			
		20	1/2	3		1520CVAS3	1520CVAD3			
		30	3/4	1		1530CVAS1	1530CVAD1			
		30	3/4	3		1530CVAS3	1530CVAD3			
		40	1	1		1540CVAS1	1540CVAD1			
		40	1	3		1540CVAS3	1540CVAD3			
20,000	30	10	1/3	1	1-1/4"	2010CVAS1	2010CVAD1	24	4"	15-1/2"
		10	1/3	3		2010CVAS3	2010CVAD3			
		20	1/2	1		2020CVAS1	2020CVAD1			
		20	1/2	3		2020CVAS3	2020CVAD3			
		30	3/4	1		2030CVAS1	2030CVAD1			
		30	3/4	3		2030CVAS3	2030CVAD3			
		40	1	1		2040CVAS1	2040CVAD1			
		40	1	3		2040CVAS3	2040CVAD3			
25,000	37-1/2	10	1/2	1	1-1/4"	2510CVAS1	2510CVAD1	44	4"	15-1/2"
		10	1/2	3		2510CVAS3	2510CVAD3			
		20	3/4	1		2520CVAS1	2520CVAD1			
		20	3/4	3		2520CVAS3	2520CVAD3			
		30	1	1		2530CVAS1	2530CVAD1			
		30	1	3		2530CVAS3	2530CVAD3			
		40	1-1/2	1		2540CVAS1	2540CVAD1			
		40	1-1/2	3		2540CVAS3	2540CVAD3			
30,000	45	10	1/2	1	1-1/4"	3010CVAS1	3010CVAD1	44	4"	15-1/2"
		10	1/2	3		3010CVAS3	3010CVAD3			
		20	3/4	1		3020CVAS1	3020CVAD1			
		20	3/4	3		3020CVAS3	3020CVAD3			
		30	1-1/2	1		3030CVAS1	3030CVAD1			
		30	1-1/2	3		3030CVAS3	3030CVAD3			
40,000	60	10	1	1	1-1/4"	4010CVAS1	4010CVAD1	70	4"	15-1/2"
		10	1	3		4010CVAS3	4010CVAD3			
		20	1-1/2	1		4020CVAS1	4020CVAD1			
		20	1-1/2	3		4020CVAS3	4020CVAD3			
50,000	75	20	1-1/2	1	1-1/4"	5020CVAS1	5020CVAD1	70	4"	15-1/2"
		20	1-1/2	3		5020CVAS3	5020CVAD3			

# Dimensional Data



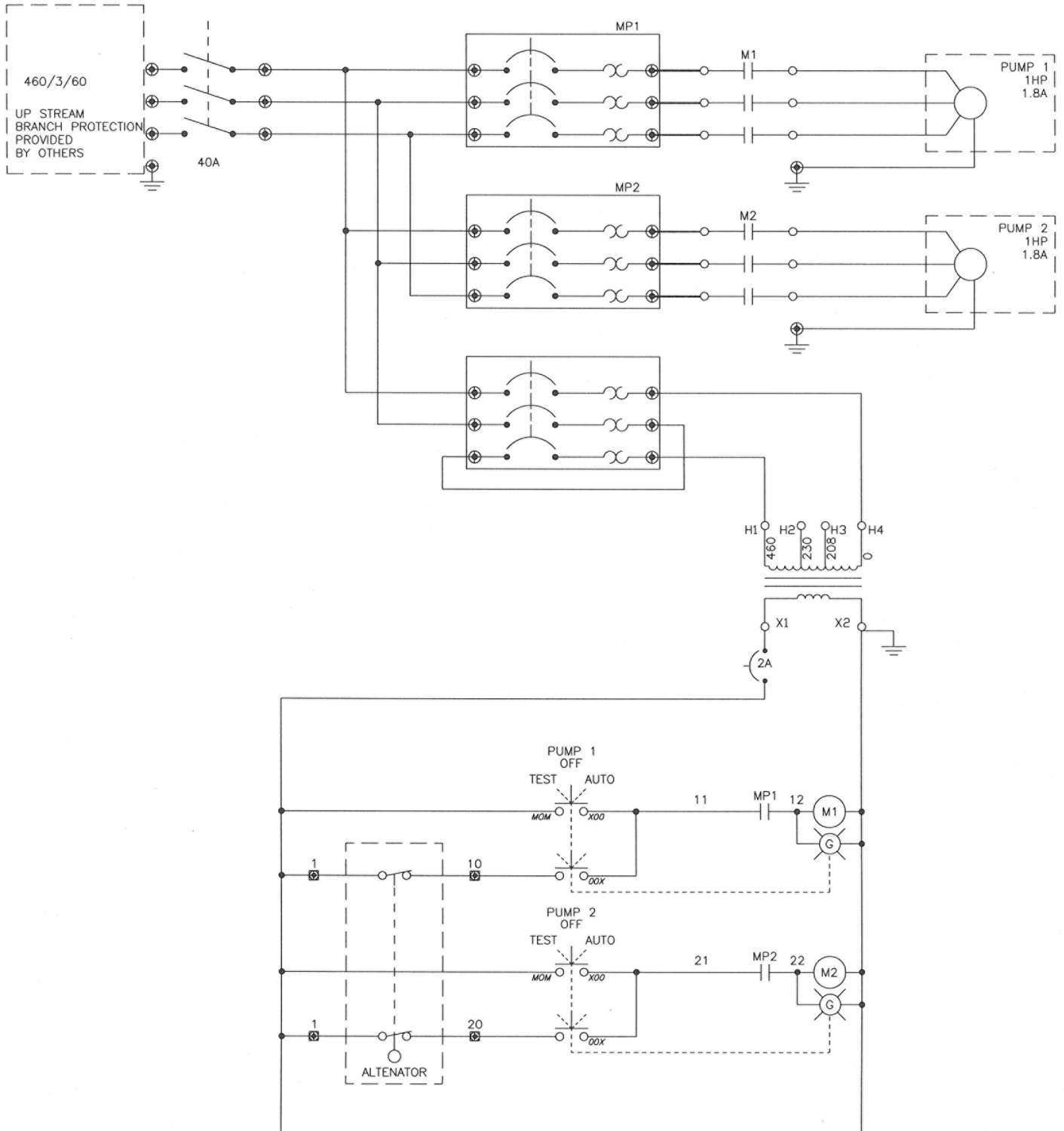
OPTIONAL CONTROL PANEL  
 Includes:  
 NEMA 4/12 Enclosure  
 Main thru door disconnect  
 2 Green illuminated TOA switches  
 2 magnetic starters with overloads  
 Multi tap transformer  
 Primary & secondary circuit breakers  
 Terminal Strip  
 Mounted and wired

NOTE: IF ISOLATION VALVES ARE NOT REQUIRED SUBTRACT 3 1/4" FROM THE "D" DIMENSION.



Rec Cap Gal.	Inlet Size	A Inlet Height	B	C	D	E	F	G	H VENT
10	2	9	12	24	27 1/4	16 1/4	15 3/4	27 3/4	1
24	4	15 1/2	19 1/4	24	33 1/4	22 1/4	15 3/4	35	1
44	4	15 1/2	19 1/4	29 1/2	37 1/4	26 1/4	21 3/4	35	1
70	4	15 1/2	19 1/4	36	43 1/4	32 1/4	27 3/4	35	1
100	4	15 1/2	19 1/4	42	49 1/4	38 1/4	33 3/4	35	1

# Three Phase Wiring Diagram



REV	DATE	DESCRIPTION	DESIGN	SHEET	TOTAL SHEETS
			D-F-S-C	SIMPLEX	
			ENG		1 OF 1
00-00-00		PRELIMINARY	JOB	400XXXX	RP-XXXX

EXTERNAL FROM THIS PANEL

102 W. CHICAGO ST.  
ALBION, IA 50005  
641-488-2319

**RUSSELL PUMP AND ENGINEERING INC.**