

Series 66

High Purity 3-Piece Ball Valve

Features

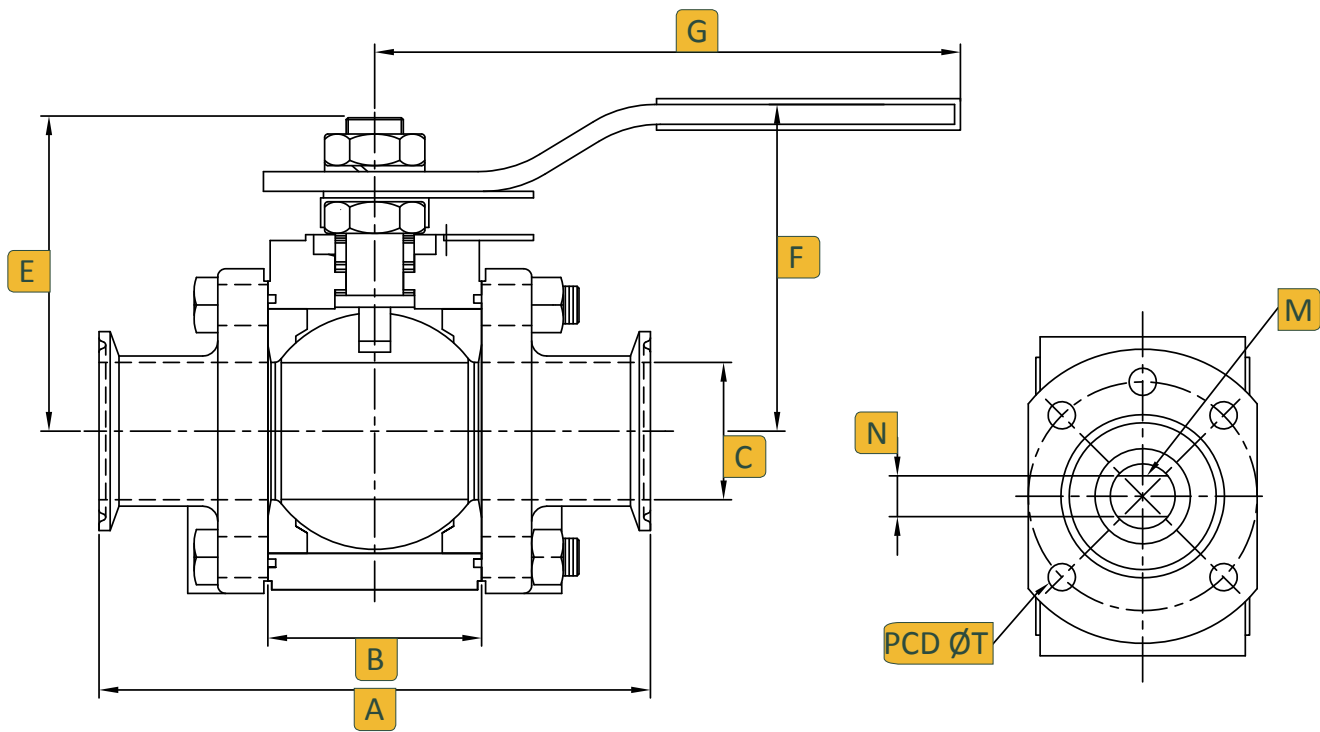
- Full port
- ASME/BPE - 2009 compliant
- 3-piece design
- High cycle stem design
- Encapsulated Body Bolts
- ISO 5211 mounting pad
- Wetted parts polished to 14-18 RH
- Optional 8-10 RA Electropolish
- Optional purge ports



Valves, Automation & Controls

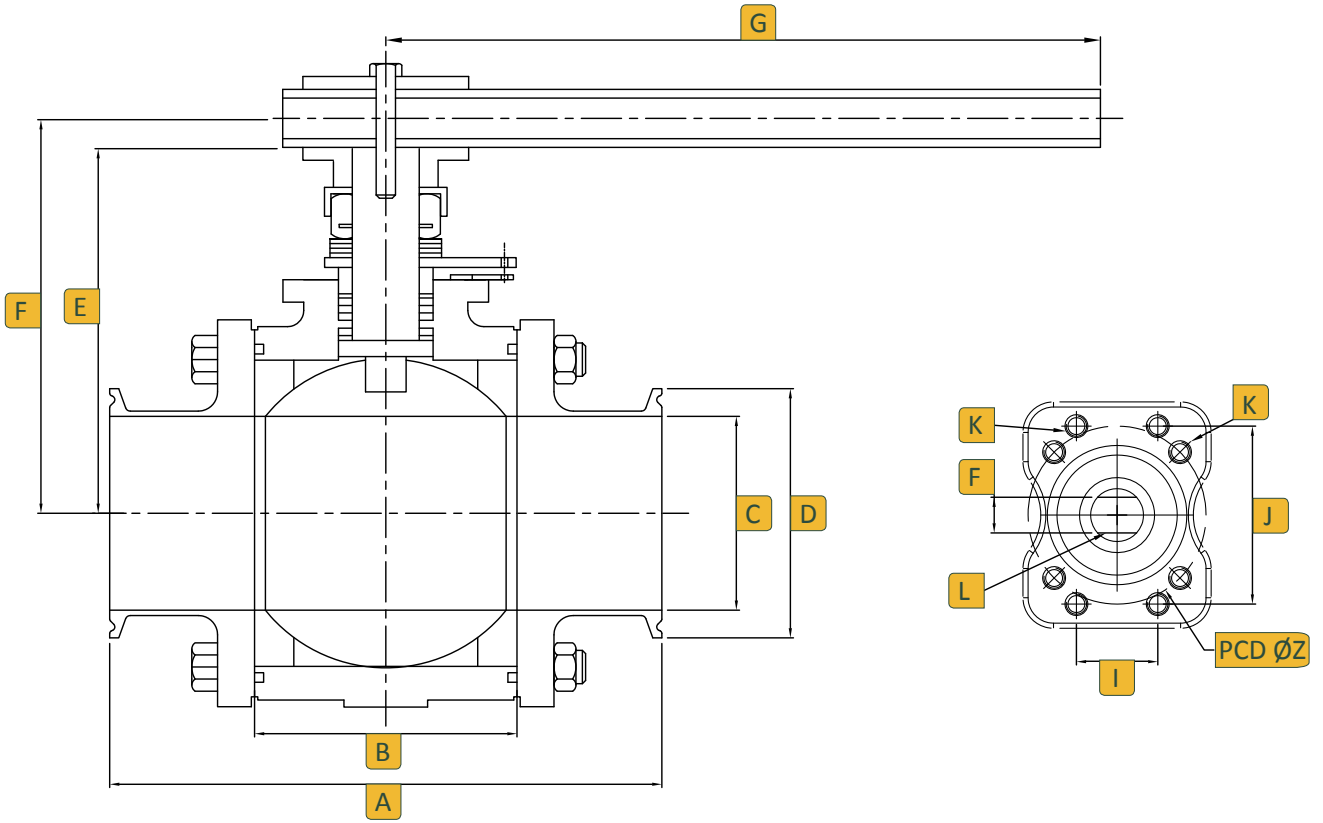


1/2" - 2" Dimensions



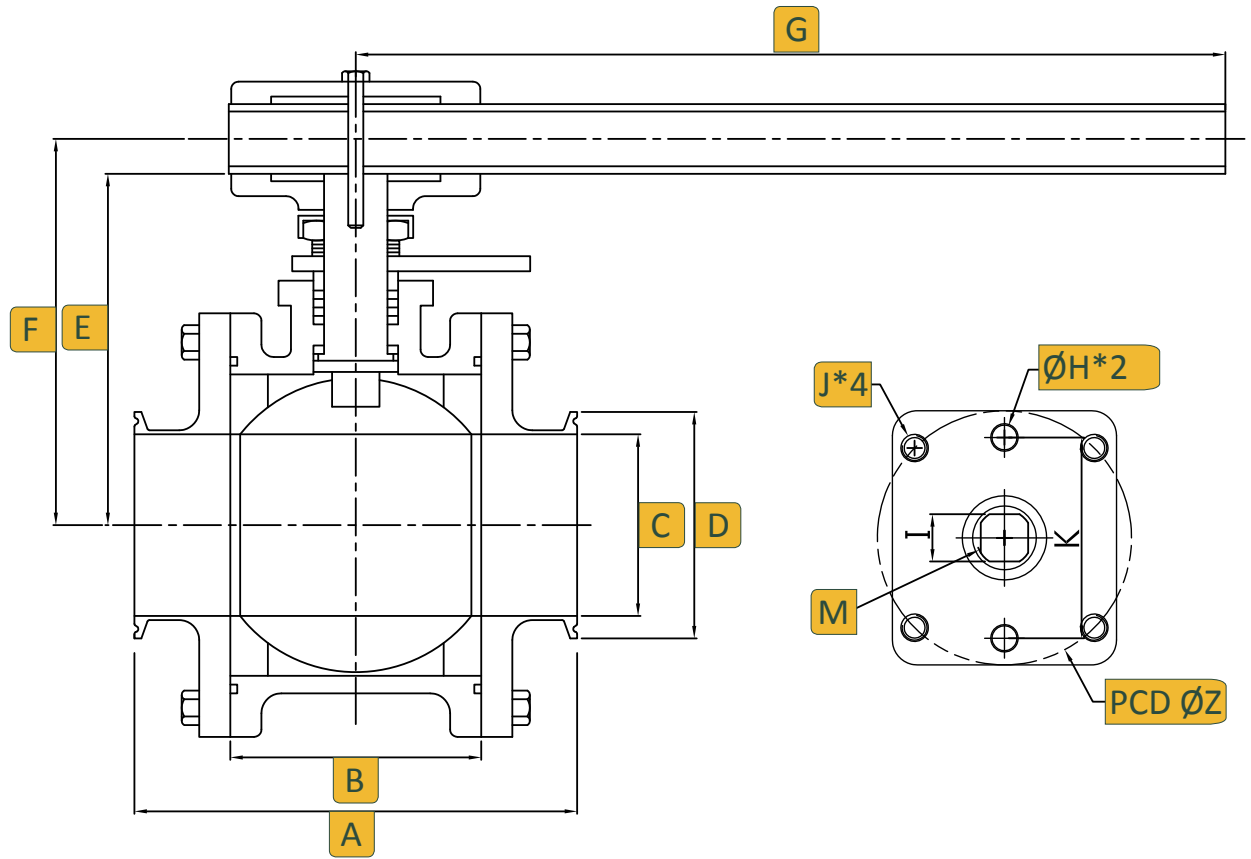
Size	A	B	C	E	F	G	H	T	N	M
1/2	3.50	0.97	0.37	1.56	2.11	4.50	M5	1.42	0.22	3/8-24
3/4	4.00	1.05	0.62	1.61	2.17	4.50	M5	1.42	0.22	3/8-24
1	4.50	1.54	0.87	2.31	2.59	5.75	M5	1.65	0.30	7/16-20
1-1/2	5.50	2.13	1.37	3.06	3.18	7.00	M6	1.97	0.34	9/16-18
2	6.25	2.66	1.87	3.40	3.52	7.00	M6	1.97	0.34	9/16-18

2-1/2" Dimensions



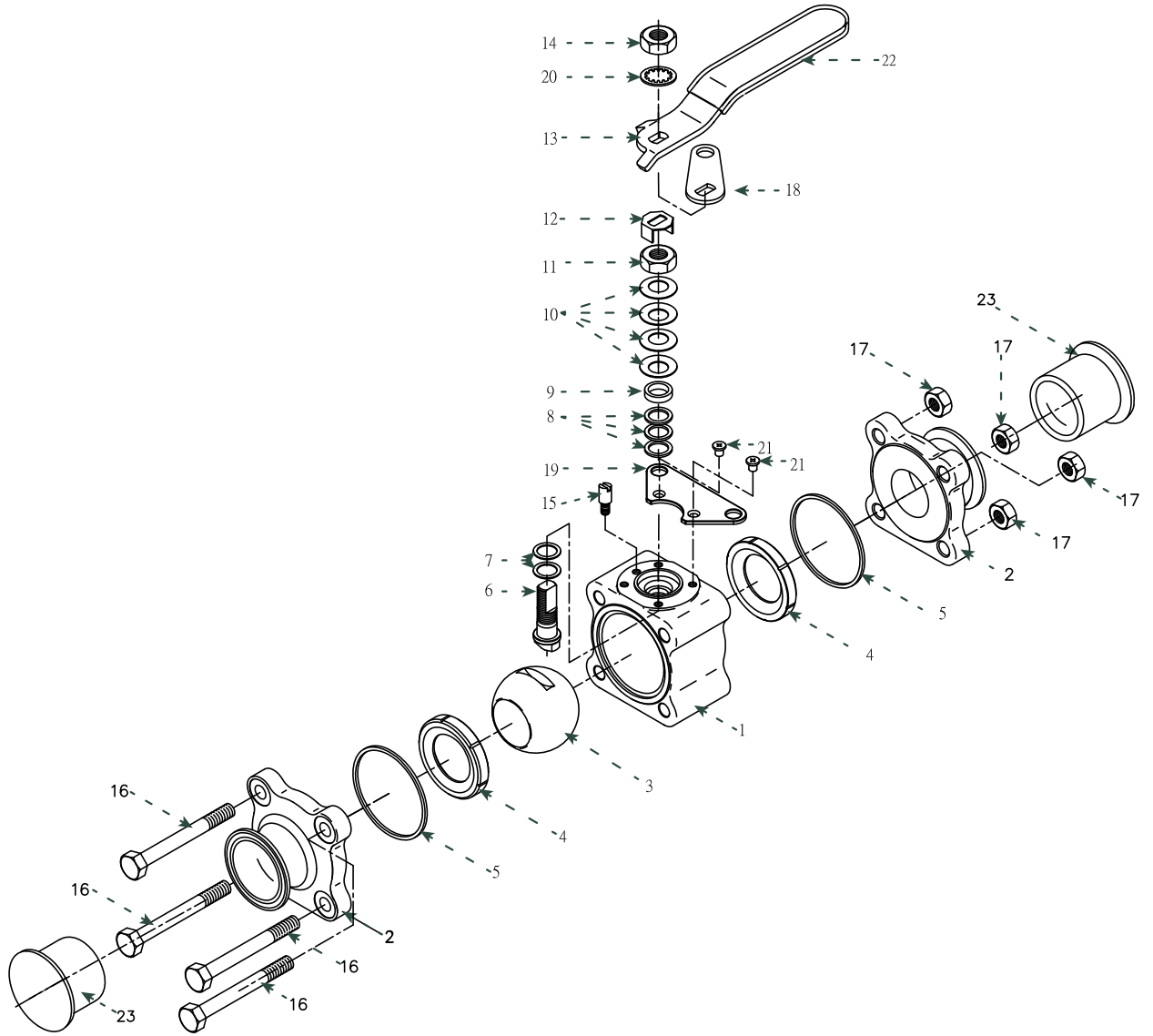
Size	A	B	C	D	E	F	G	H	I	J	K	Z	L
2-1/2	6.75	3.20	2.37	3.05	4.85	5.20	8.74	0.55	1.26	2.76	M8*P1.25	2.76	M20*P2.0

3" & 4" Dimensions

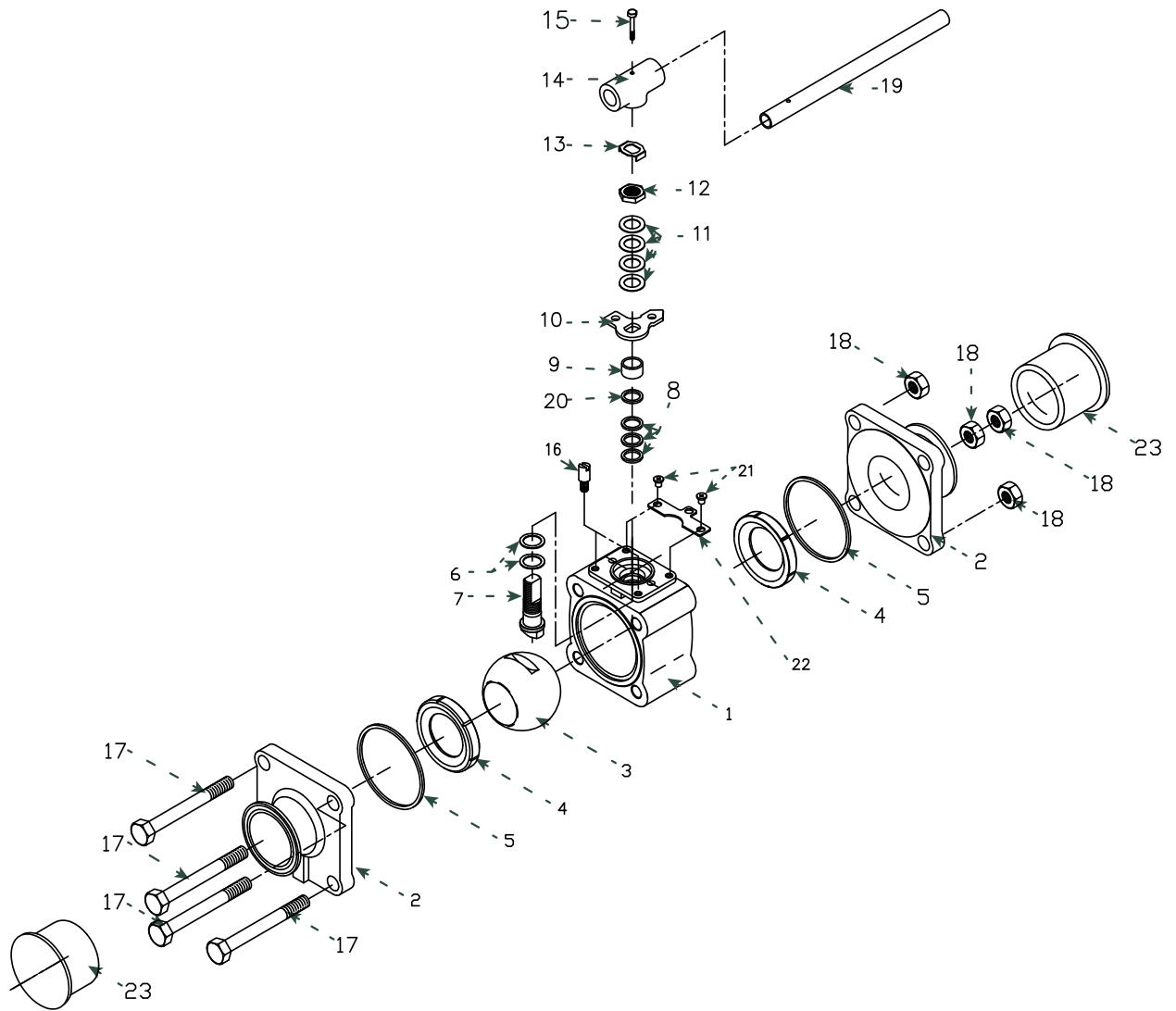


Size	A	B	C	D	E	F	G	H	I	K	J	Z	M
3	6.75	3.96	2.87	3.58	59.67	6.52	13.74	0.39	0.75	3.17	M10*P1.5	4.02	1-14
4	8.25	4.73	3.83	4.68	6.50	7.05	13.74	0.39	0.75	3.17	M10*P1.5	4.02	1-14

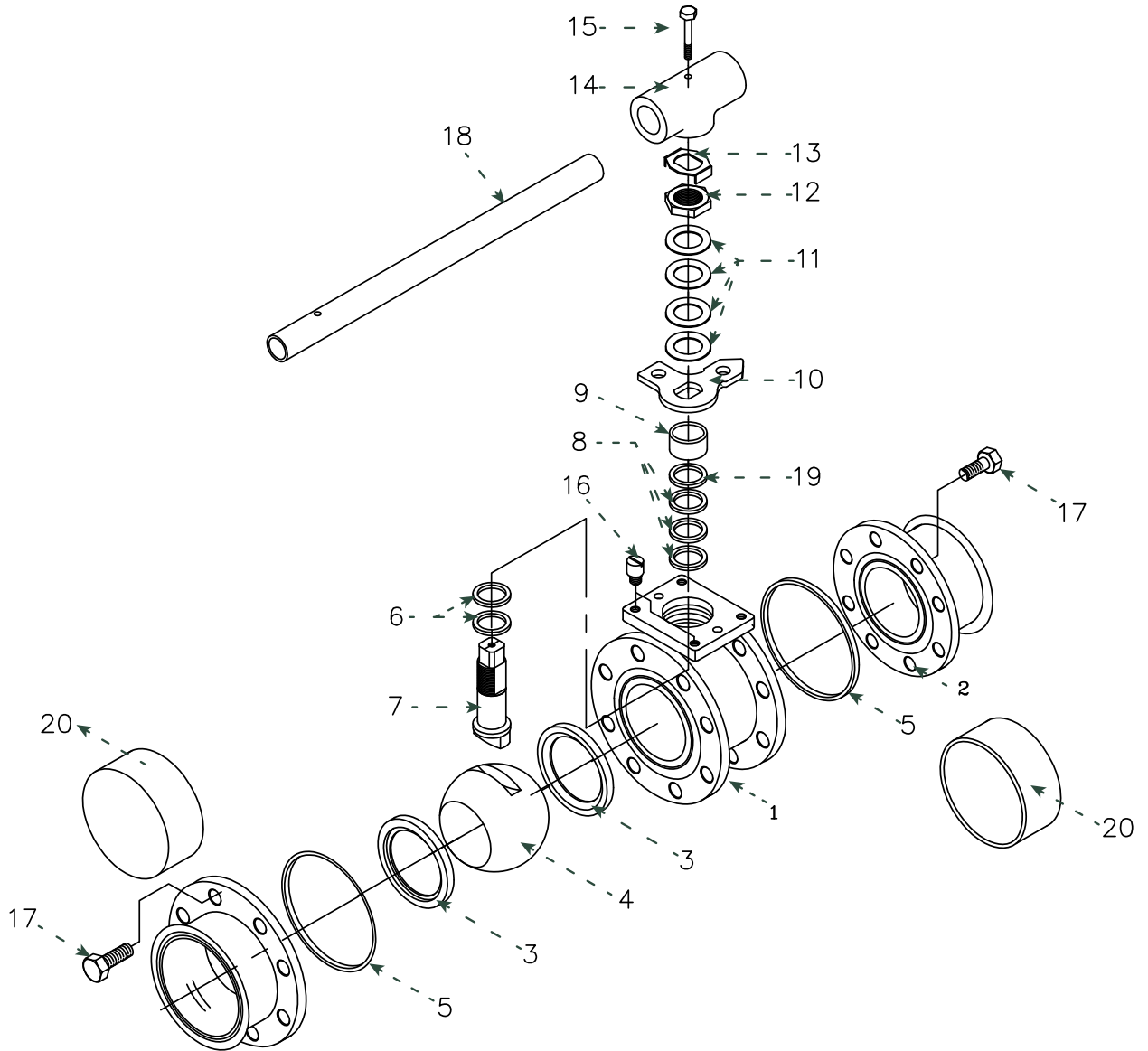
1/2" - 2" Parts & Materials



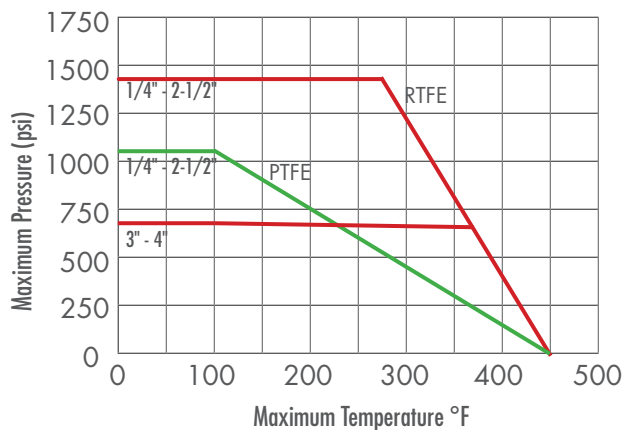
No.	Part Name	Qty	Material
1	Body	1	316L Stainless Steel ASTM A351 CF3M
2	Body Cap	2	316L Stainless Steel ASTM A351 CF3M
3	Ball	1	316L Stainless Steel
4	Seat	2	PTFE, TFM, RTFE
5	Body Seal	2	PTFE, TFM
6	Stem	1	316L Stainless Steel
7	Thrust Washer	2	TFM, Polyill, Peek
8	Stem Seal	3	TFM, Polyill, Peek
9	Gland	1	304 Stainless Steel
10	Belleville Washer	4	301 Stainless Steel
11	Packing Nut	1	304 Stainless Steel
12	Lock Tab	1	304 Stainless Steel
13	Handle	1	304 Stainless Steel
14	Handle Nut	1	304 Stainless Steel
15	Stop Screw	1	304 Stainless Steel
16	Body Bolts	4	304 Stainless Steel
17	Body Nuts	4	316 Stainless Steel
18	Upper Stopper	1	304 Stainless Steel
19	Lower Stopper	1	304 Stainless Steel
20	Teeth Washer	1	304 Stainless Steel
21	Screw	2	304 Stainless Steel
22	Handle Cover	1	PVC
23	Protection Cover	2	PVC



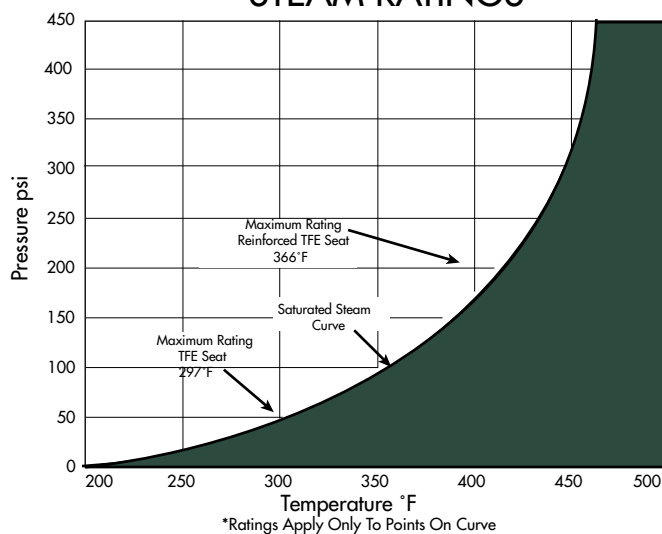
No.	Part Name	Qty	Material
1	Body	1	316L Stainless Steel ASTM A351 CF3M
2	Body Cap	2	316L Stainless Steel ASTM A351 CF3M
3	Ball	1	316L Stainless Steel
4	Seat	2	PTFE, TFM, RTFE
5	Body Seal	2	PTFE, TFM, RTFE
6	Thrust Wsher	2	MG1241, TFM, RTFE
7	Stem	1	316L Stainless Steel
8	Stem Seal	3	MG1241, TFM, RTFE
9	Gland	1	304 Stainless Steel
10	Stopper	1	304 Stainless Steel
11	Belleville Washer	4	301 Stainless Steel
12	Packing Nut	1	304 Stainless Steel
13	Lock Tab	1	304 Stainless Steel
14	Wrench Block	1	304 Stainless Steel
15	Handle Bolt	1	304 Stainless Steel
16	Stop Pin	1	304 Stainless Steel
17	Body Bolts	4	304 Stainless Steel
18	Body Nuts	4	316 Stainless Steel
19	Handle	1	304 Stainless Steel
20	Gland Washer	1	304 Stainless Steel
21	Screw	2	304 Stainless Steel
22	Lower Stopper	1	304 Stainless Steel
23	Protection Cap	2	PVC



No.	Part Name	Qty	Material
1	Body	1	316L Stainless Steel ASTM A351 CF3M
2	Body Cap	2	316L Stainless Steel ASTM A351 CF3M
3	Seat	2	TFM, RTFE, PTFE
4	Ball	1	316L Stainless Steel
5	Body Seal	2	TFM, RTFE, PTFE
6	Thrust Washer	2	MG1241, TFM
7	Stem	1	316L Stainless Steel
8	Stem Seal	3	MG1241, TFM
9	Gland	1	304 Stainless Steel
10	Stopper	1	304 Stainless Steel
11	Bellville Washer	4	301 Stainless Steel
12	Packing Nut	1	304 Stainless Steel
13	Lock Tab	1	304 Stainless Steel
14	Wrench Block	1	304 Stainless Steel
15	Handle Bolt	1	304 Stainless Steel
16	Stop Pin	2	304 Stainless Steel
17	Body Bolts	16	304 Stainless Steel
18	Handle	1	304 Stainless Steel
19	Gland Washer	1	304 Stainless Steel
20	Protection Cover	2	PVC



STEAM RATINGS*



Ordering

Fig: 2 - 66 - 6 - 6 - R - T - CE

Description: 2" - 66 - Stainless Steel Body Ball & Stem - RTFE Seat - PTFE Seal - Clamp Ends

Size	Series	Body & Ends	Ball & Stem	Seat	Seal	Ends	Options
1/2	66	6 316L Stainless Steel	6 316L Stainless Steel	R RTFE	T PTFE	CE Clamp 180 Grit BE Butt weld 120 Grit	X Oxygen Service SF Silicone Free OH Oval Handle
3/4				T PTFE			
1				C Cavity Filler			
1-1/2							
2							
3							
4							

SHARPE - SERIES 66 | High Purity 3-Piece Ball Valve
 Toll Free (877) 774-2773 | Local (708) 562-9221 | Fax (708) 562-0890 | www.sharpevalves.com