



125T SERIES CAST IRON TRIPLE DUTY VALVES

Pressures to 200 PSIG (13.8 barg)
Temperatures to 212°F (100°C)

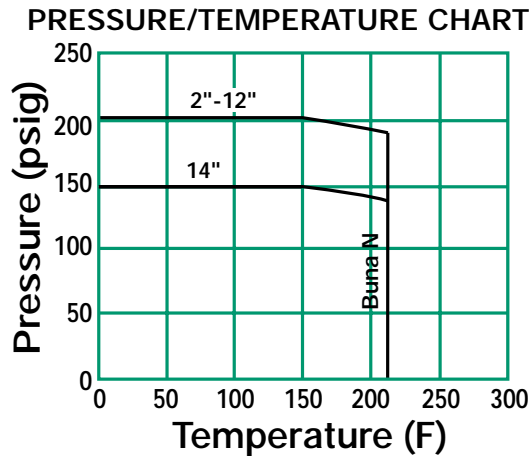
- Triple function includes a spring loaded silent check valve, balancing valve and shutoff valve to minimize cost and reduce installation time
- Operates automatically and silently
- Center guided soft seal disc ensures leak free performance
- Spring loaded Buna N disc provides no impact shutoff and prevents water hammer upon closing
- Graduated position indicator provides accurate visual check of valve position
- Standard handwheel for ease of operation
- Cracking pressure of 1/4 PSI
- Drain and differential connections with plug are furnished as standard

APPLICATIONS

- Pump protection

APPLICABLE CODES (Designed in accordance with)

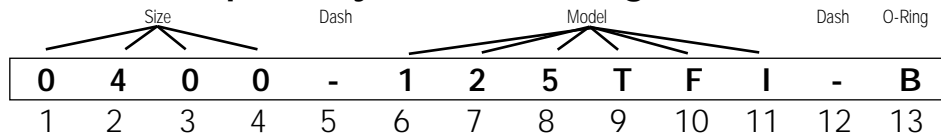
- ASME B16.1



MODELS

- 125TFI - Cast Iron Triple Duty Valve

Triple Duty Valve Ordering Code



Size - Position 1-4
0200 - 2"
0250 - 2½"
0300 - 3"
0400 - 4"
0500 - 5"
0600 - 6"
0800 - 8"
1000 - 10"
1200 - 12"

Dash - Position 5
Model - Position 6 -11
125TFI - Triple Duty Valve
Dash - Position 12
O-Ring - Position 13
B - Buna N

For any variations, use the part numbering system above but clearly indicate the additional requirement.

MAXIMUM RATED FLOW COEFFICIENTS (Cv)*

Valve Size									
2	2-1/2	3	4	5	6	8	10	12	14
83	129	189	335	529	766	1372	2154	3106	4016

* Maximum Cv rating is at 100% of stem rise.

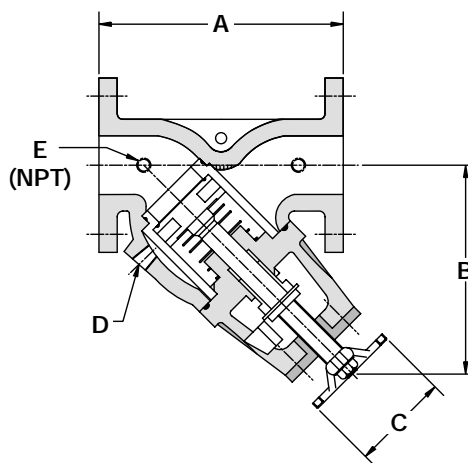
125T SERIES CAST IRON TRIPLE DUTY VALVES

SPECIFICATION

Triple Duty Valve shall install in a straight run of pipe and perform as a center guided silent check valve, shutoff valve and balancing valve. The valve shall have _____ psi cracking pressure. The valve shall have Cast Iron ASME Class 125 FF flanges. The seat shall have Buna N O-ring seals. The valve shall be an inlet size of _____ and a Cv rating of _____. The Triple Duty Valve shall be SSI T Series.

MATERIALS OF CONSTRUCTION

Body & YokeCast Iron A126-B
 Disc GuideDuctile Iron/Nickel Plate
 DiscDuctile Iron
 Packing GlandDuctile Iron
 PackingGraphite
 SpringStainless Steel
 Stem.....Stainless Steel
 Seat SealBuna N
 Disc SealBuna N



Connections:
2" - 14" FF Flanged

DIMENSIONS inches (mm) AND WEIGHTS pounds (kg)

Size	A	B	C	D	E	Weight
2 (50)	8 ³ / ₈ (213)	9 ¹ / ₈ (244)	6 ⁵ / ₈ (159)	1/2 (15)	1/4 (8)	34 (15)
2 ¹ / ₂ (65)	9 ¹³ / ₈ (250)	10 (254)	6 ⁵ / ₈ (159)	1/2 (15)	1/4 (8)	40 (18)
3 (80)	10 (254)	10 ¹ / ₈ (257)	9 ¹ / ₈ (238)	1/2 (15)	1/4 (8)	50 (23)
4 (100)	14 ¹ / ₂ (368)	12 ⁵ / ₈ (321)	9 ¹ / ₈ (238)	1/2 (15)	1/4 (8)	100 (45)
5 (125)	16 (407)	16 ³ / ₈ (416)	11 (279)	1/2 (15)	1/4 (8)	155 (70)
6 (150)	18 (457)	17 ¹ / ₂ (444)	11 (279)	3/4 (20)	1/4 (8)	200 (91)
8 (200)	21 ¹ / ₂ (546)	18 ¹ / ₂ (470)	12 ¹ / ₂ (317)	3/4 (20)	1/4 (8)	350 (159)
10 (250)	25 ¹ / ₂ (648)	21 ¹ / ₈ (552)	12 ¹ / ₂ (317)	1 (25)	1/4 (8)	480 (218)
12 (300)	30 (762)	24 ¹ / ₂ (622)	12 ¹ / ₂ (317)	1 (25)	1/4 (8)	660 (299)
14 (350)	30 ³ / ₈ (771)	24 ¹ / ₂ (622)	12 ¹ / ₂ (317)	1 (25)	1/4 (8)	790 (359)

Dimensions and Weights are approximate. Contact factory for Certified Drawings.
 Dimensions shown are in full open position.

PRESSURE DROP VS FLOW RATE (Sizes 2" - 14")

