

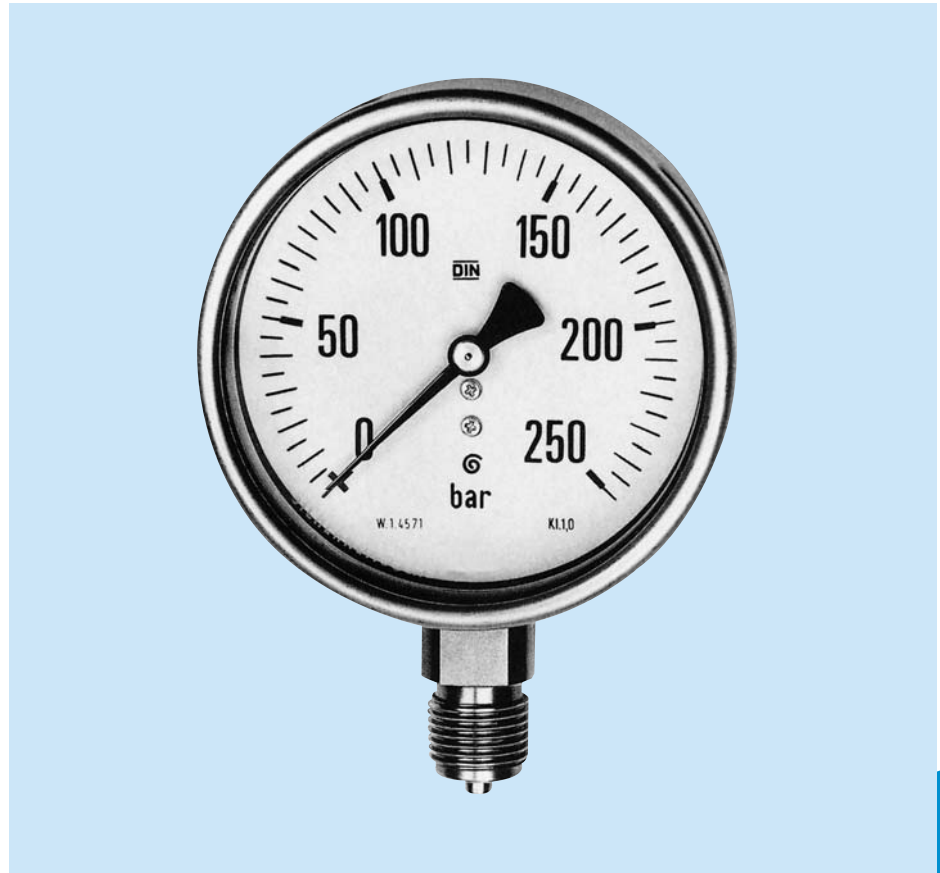


### Features

- Stainless Steel Construction for Maximum Corrosion Resistance
- Highly Dependable
- Pressures Up to 10,000 PSIG
- ±1.0% Accuracy
- Pulsation and Vibration Damping Through Optional Glycerin Filling

Aggressive surroundings require aggressive application of corrosion resistant materials such as stainless steel. The KOBOLD DRF26 utilizes all stainless steel internal and external metal components to offer maximum protection from nasty chemicals. This makes the DRF26 a good choice for installation into the chemical, oil, plastics and paper industries. Use of a bourdon tube element maintains accuracy at ±1.0% of full scale even when the going gets tough. The DRF26 also features a rear blowout plug in its housing to protect users in case a catastrophic overpressure event should occur.

As with most KOBOLD pressure gauges, pulsation and vibration in the medium may be accommodated through selection of an optional glycerin filling for the indicator mechanism.



**KOBOLD DRF26 Pressure Gauge**

### Specifications

**Ranges:** -14.7 to 10,000 PSIG (see table)

**Over Pressure Protection**  
**Momentary:** 1.3 x range max.

**Sensing Element:** bourdon tube

**Accuracy:** ±1.0% of full scale

**Operating Temperature**  
**Medium:** freezing to 180°F  
**Ambient:** freezing to 140°F

**Fittings:** 1/2" NPT

### Materials of Construction

**Wetted Parts:**  
**Element:** 316Ti SS  
**Fitting:** 316 Ti SS

**Exterior**  
**Movement:** Stainless Steel  
**Housing:** 304 SS  
**Bezel:** 304 SS  
**Pointer:** Black aluminum  
**Indicator Dial:** White aluminum  
**Window:** Safety glass

**Options:** Glycerin damped indicator assembly

DRF26 Ordering Information	
<b>DRF26</b>	= All Stainless Steel Bourdon Tube Pressure Gauge
-1	= 100 mm (4 inch) Dial Face, Bottom Process Connection
-2	= 100 mm (4 inch) Dial Face, Rear Process Connection
-3	= 160 mm (6 inch) Dial Face, Bottom Process Connection
-4	= 160 mm (6 inch) Dial Face, Rear Process Connection
<b>Range</b>	= Pressure Range Abbreviation
<b>H00</b>	= -30" to 0" Hg
<b>115</b>	= 15 PSIG
<b>130</b>	= 30 PSIG
<b>160</b>	= 60 PSIG
<b>210</b>	= 100 PSIG
<b>216</b>	= 160 PSIG
<b>220</b>	= 200 PSIG
<b>230</b>	= 300 PSIG
<b>260</b>	= 600 PSIG
<b>310</b>	= 1000 PSIG
<b>320</b>	= 2000 PSIG
<b>330</b>	= 3000 PSIG
<b>350</b>	= 5000 PSIG
<b>410</b>	= 10000 PSIG
<b>F</b>	= Glycerin damped indicator assembly
<b>Options</b>	
<b>Sample DRF26 Specification</b>	
DRF26	-3 410 F

P1

Dimensions (mm)

