

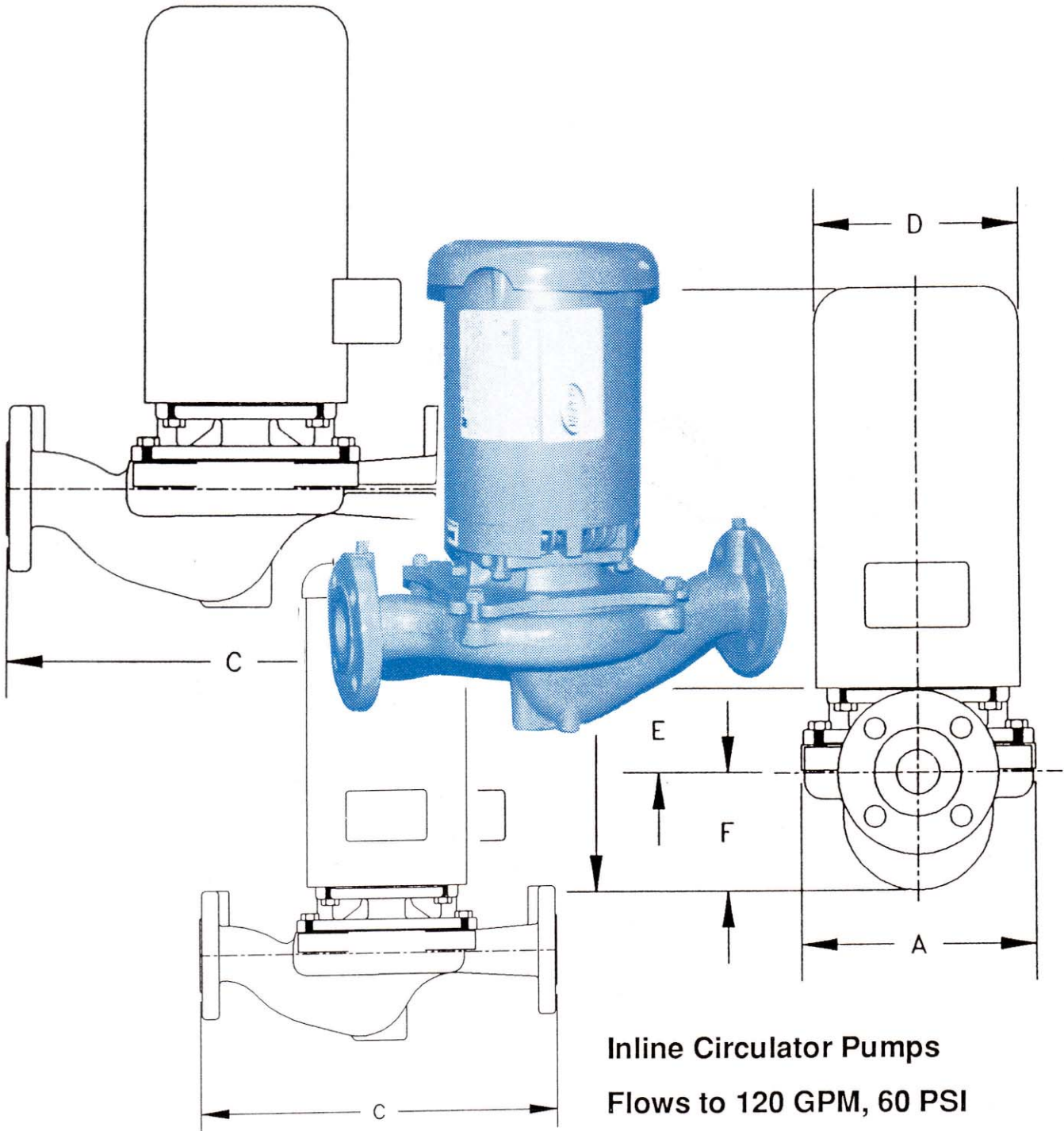


MARSHALL ENGINEERED PRODUCTS CO.

FORM 1617C

PUMP SECTION

Centrifugal Pumps, Type RP05 and RP06 - InLine



Inline Circulator Pumps
Flows to 120 GPM, 60 PSI

FEATURES

1) CASE - The unit has center line inlet and outlet flanges. The back pull-out design eliminates the need to disturb piping during servicing. Materials of construction are class 30 cast iron.

2) IMPELLER - The advanced impeller design maximizes hydraulic efficiency. Each impeller is dynamically balanced for vibration free operation.

3) MECHANICAL SEAL - The mechanical seal is Buna N and is rated for 225 degrees Fahrenheit and pressures up to 175 PSI. The ceramic seat and carbon seal face assure long trouble free service. Alternative seals are available to suit other temperatures and liquids.

4) SHAFT/MOTOR - A one piece stainless steel threaded shaft and ball bearing construction are standard in an all open drip proof enclosure. Shaft and mounting flange comply with NEMA standards allowing interchangeability.

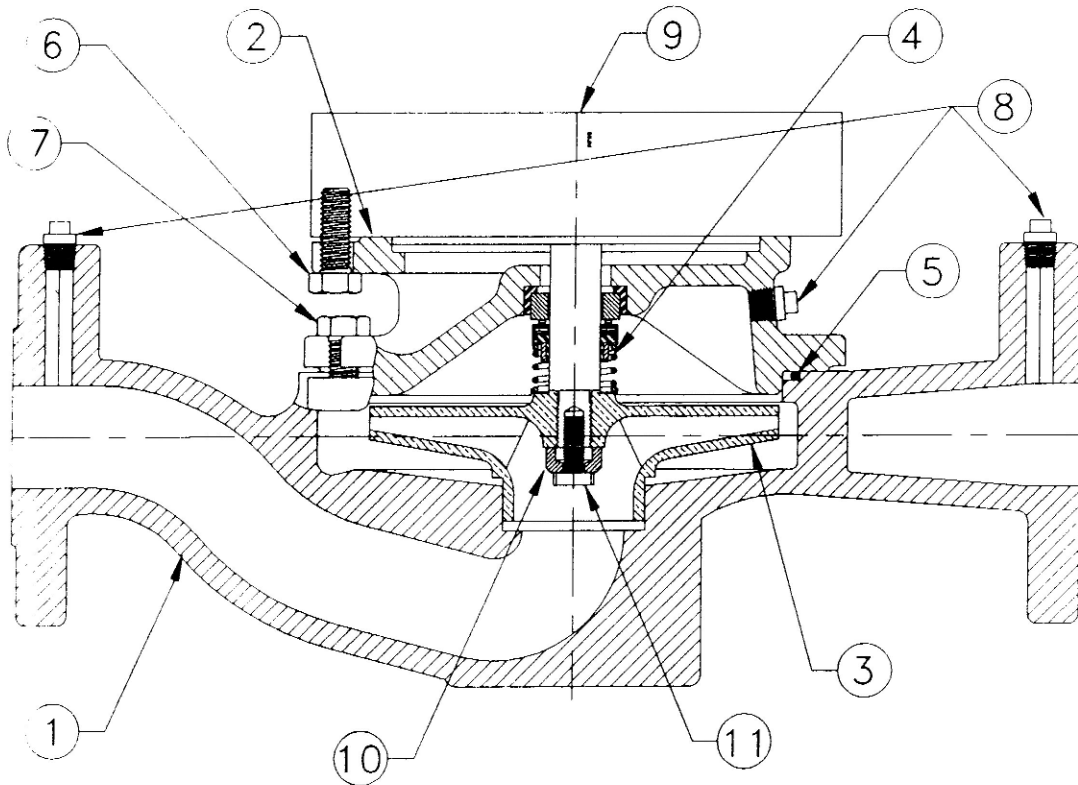
MATERIALS OF CONSTRUCTION

MAXIMUM OPERATING CONDITIONS

Based on STD. construction & pumping clear water.

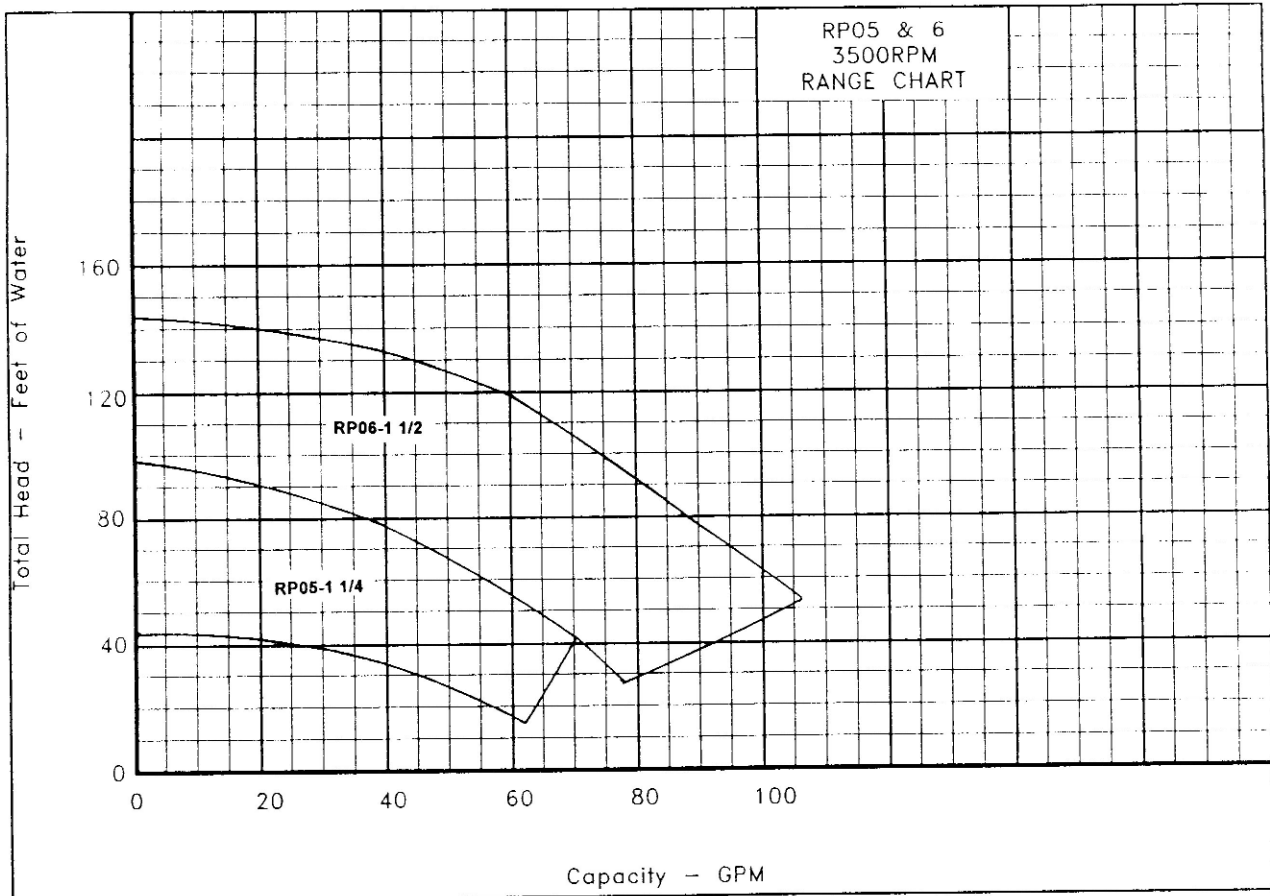
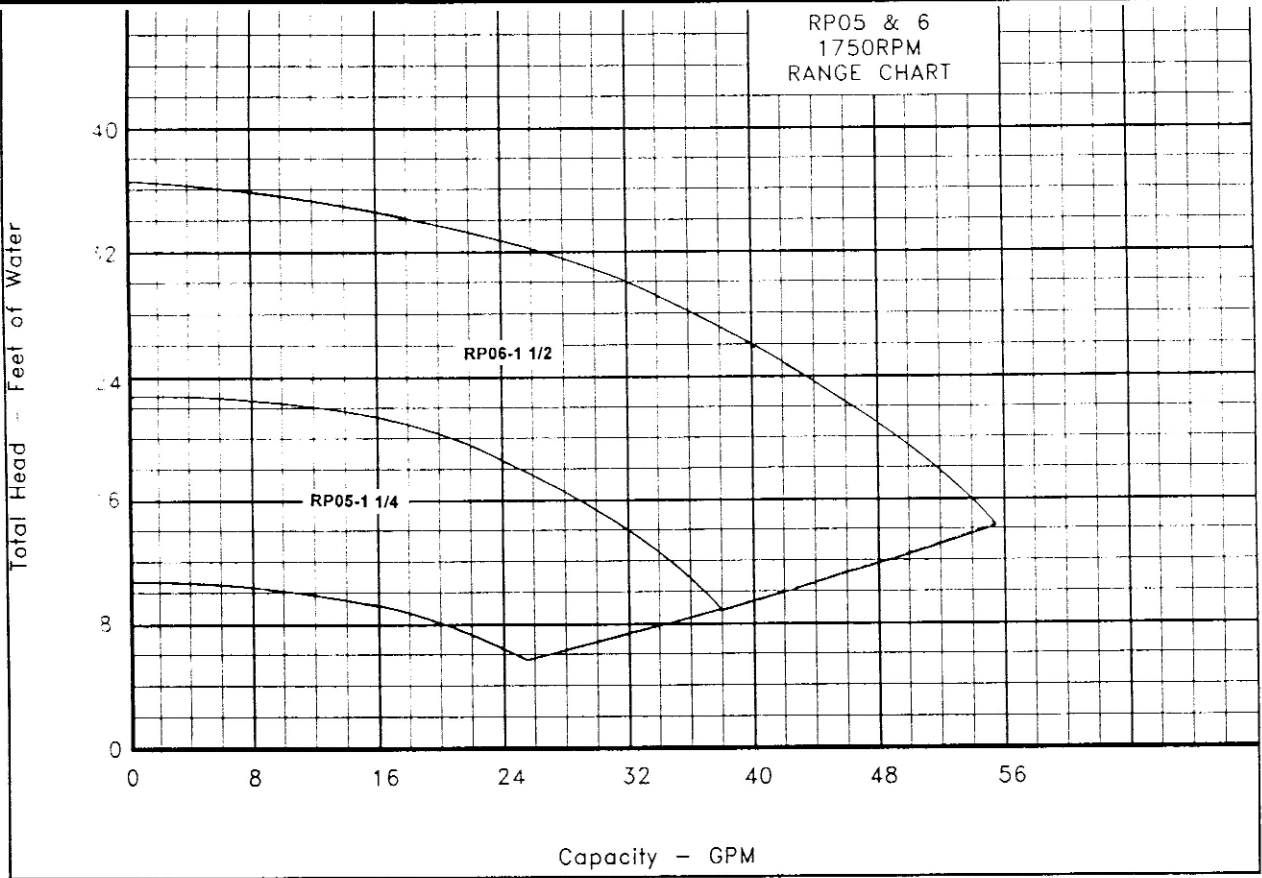
RPM -	1750, 3450
HORSEPOWER -	3
STD. SEAL TEMPERATURE -	225° F
OPT. SEAL TEMPERATURE -	300° F = EPT; 400° F = VITON
MODEL RP05 & RP06	125 LB. FLANGES
MAX. WORKING PRESS. -	175 PSI
HYDROSTATIC TEST PRESS. -	265 PSI

ITEM	DESCRIPTION	MATERIAL	OPTION
1	CASE	CLASS 30 C.I.	BRONZE
2	ADAPTER	CLASS 30 C.I.	BRONZE
3	IMPELLER	BRONZE	CAST IRON
4	MECH SEAL	BUNA N	EPT/VITON
5	O-RING	BUNA N	EPT/VITON
6,7	BOLTS	STEEL	
8	PIPE PLUG	STEEL	BRONZE
9	MOTOR	NEMA (ODP)	TEFC/XPROOF
10	WASHER	SST	BRASS
11	CAP SCREW	SST	MONEL

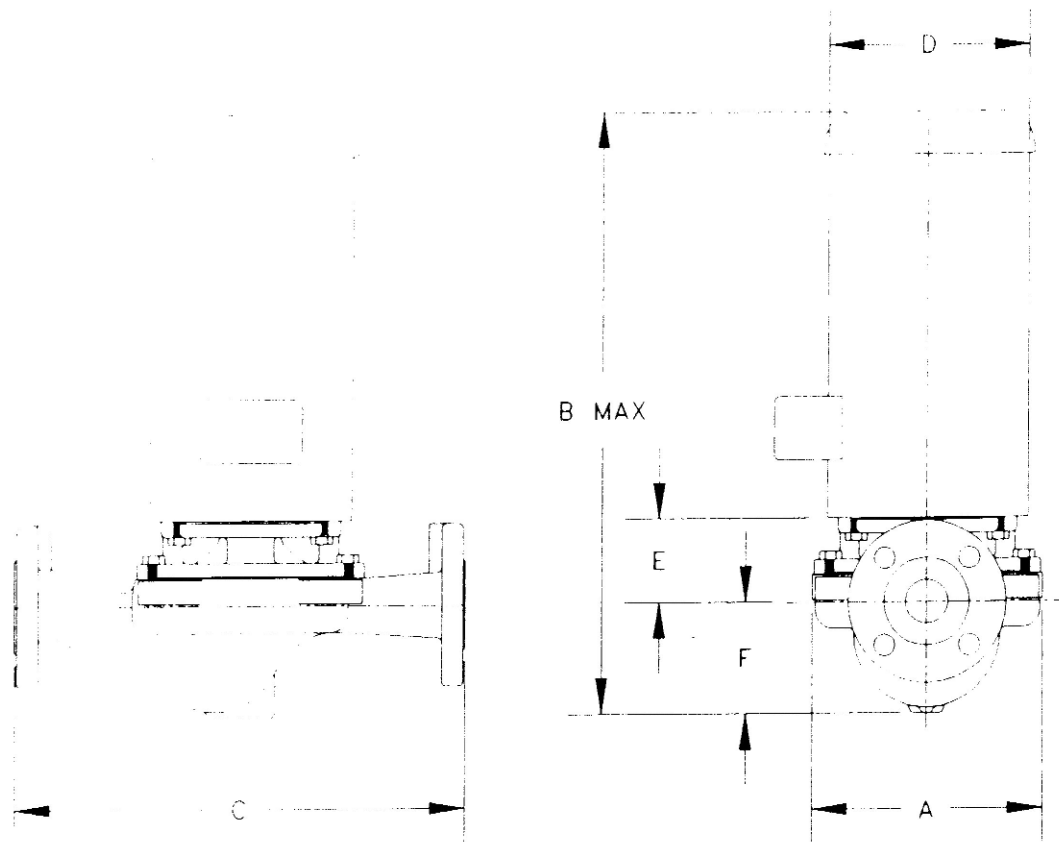


MEPCO 3056 Walker Ridge Drive, Suite C, Grand Rapids, MI 49544 616-246-1431

RANGE CHARTS

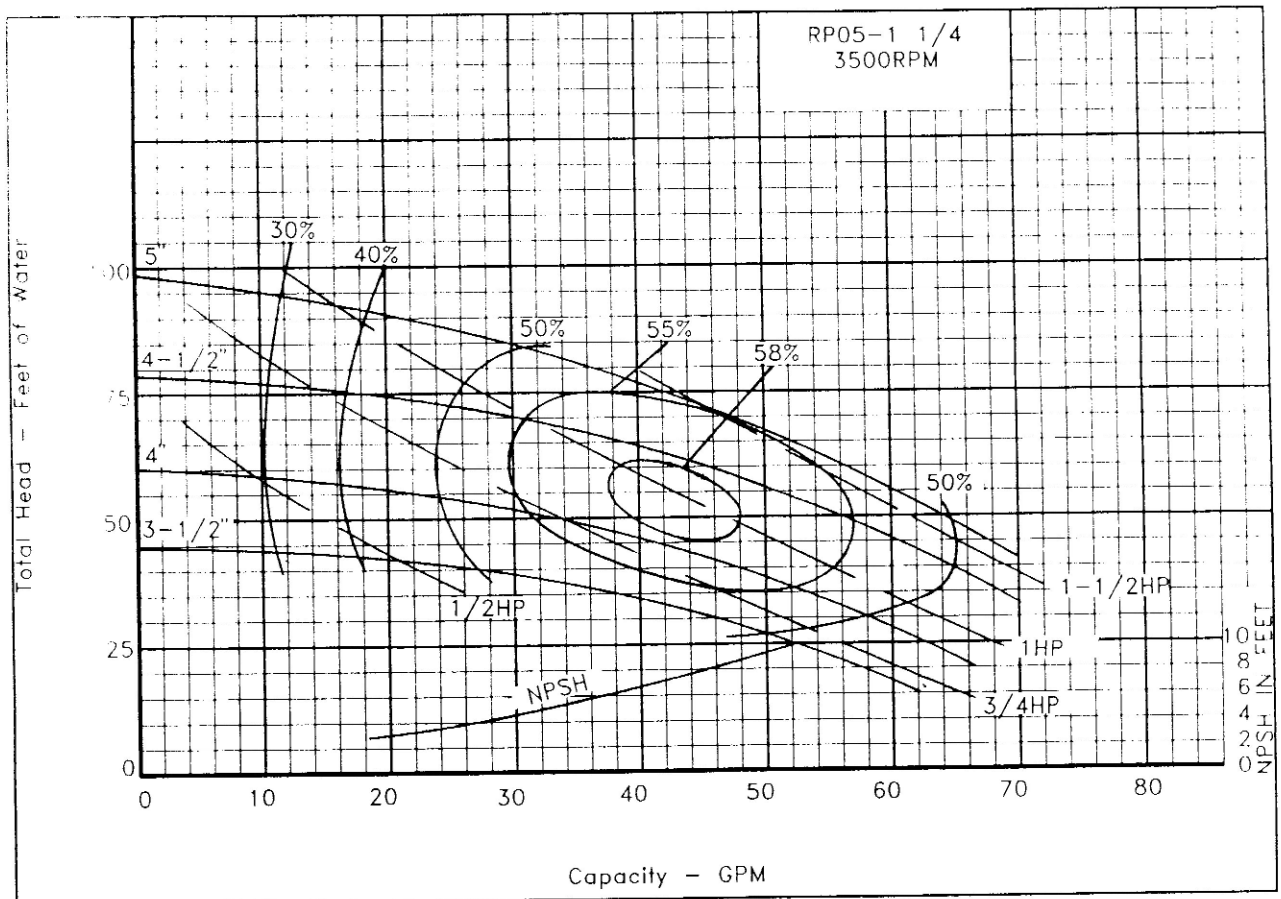
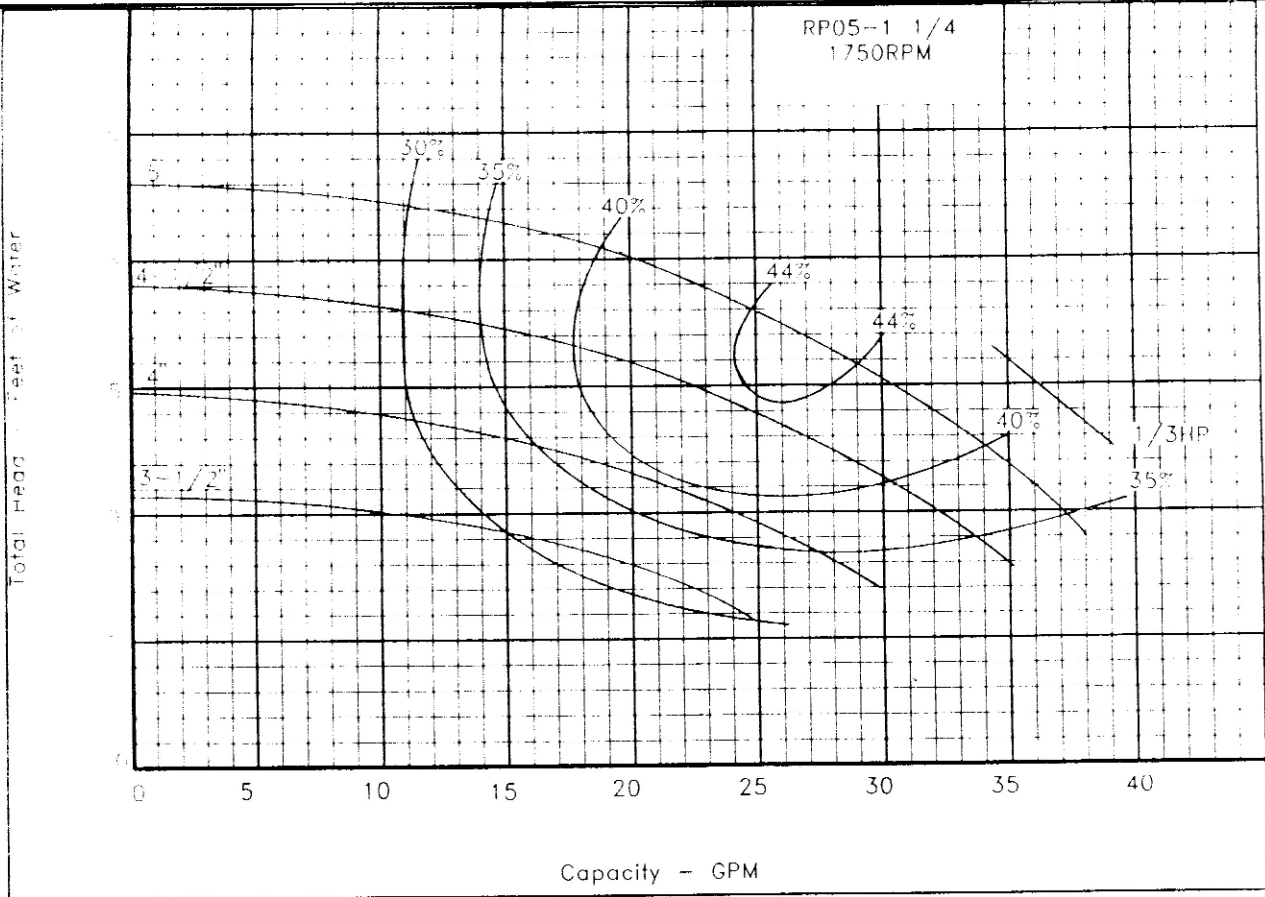


DIMENSIONS



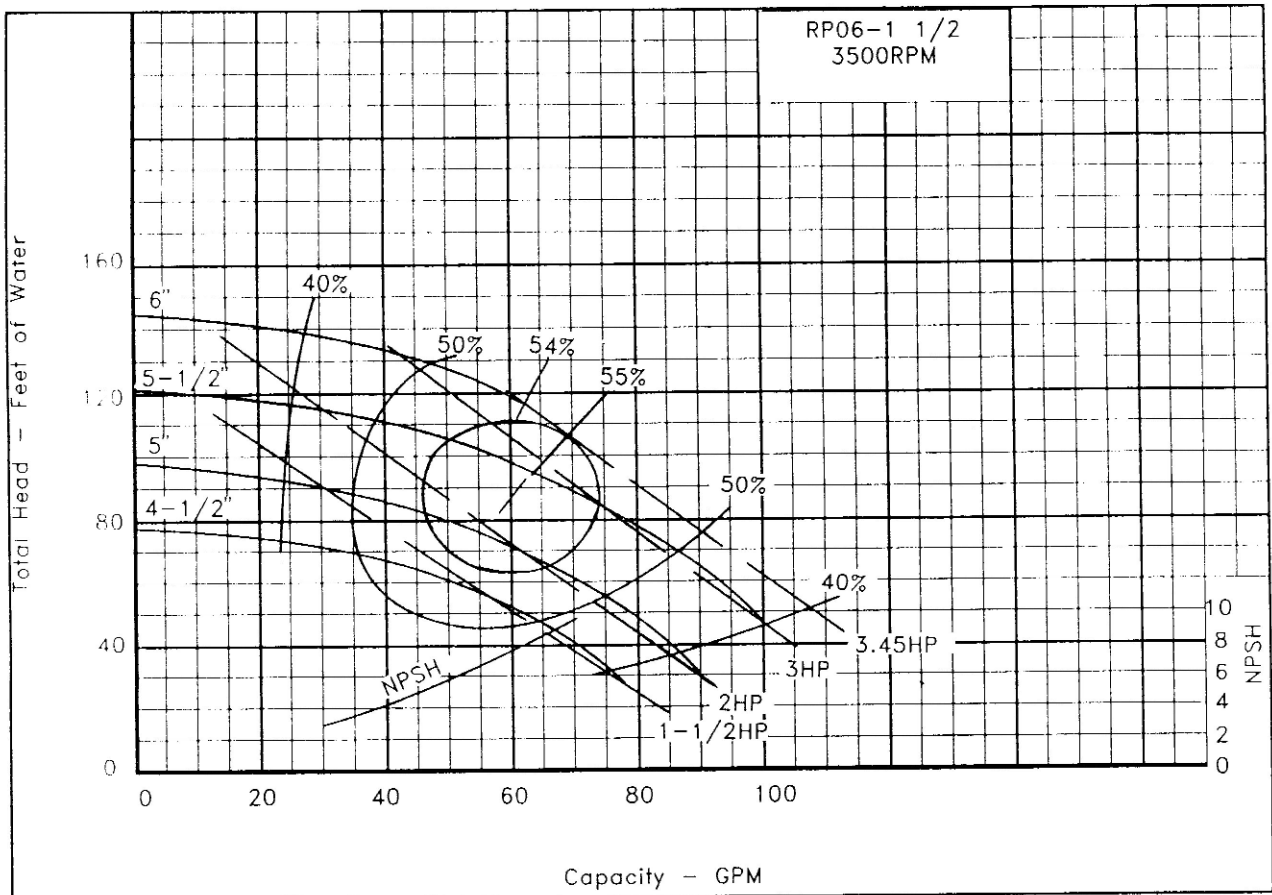
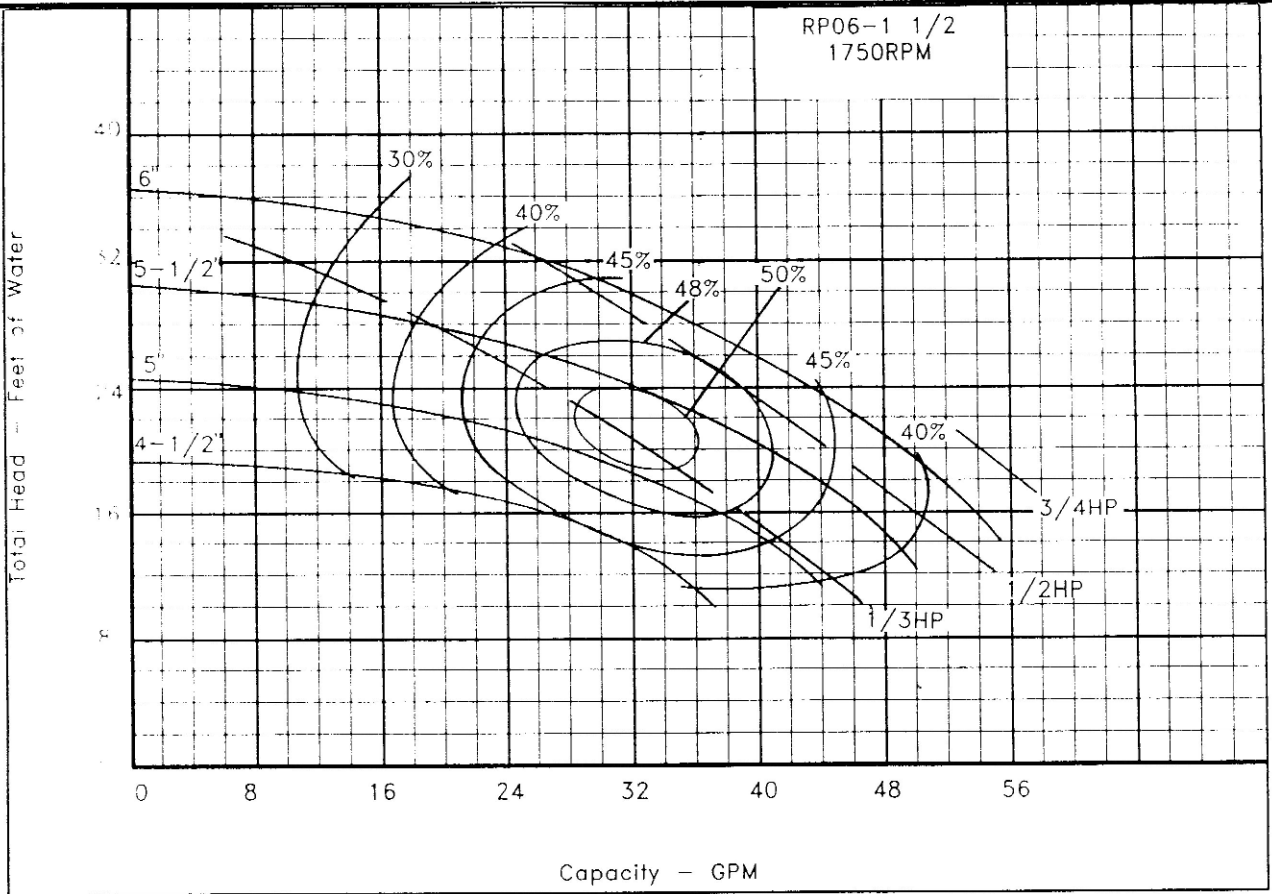
PUMP	MOTOR FRAME SIZE	DISC. & SUCTION	DIMENSIONS IN INCHES					
			A	B	C	D	E	F
RP05-12	56J	1 1/4	7	17 5/16	13 5/16	5 7/8	2 1/2	3 1/8
RP06-15	56J	1 1/2	8 3/16	18	14 7/8	5 7/8	2 1/2	3 13/16

SELECTION CURVES - MODEL RP05



NOTE: Computerized pump selection program available. - 5 -

SELECTION CURVES - MODEL RP06



NOTE: Computerized pump selection program available. - 6 -

NOTES

TYPICAL SPECIFICATIONS

Furnish and install pumps with capacities as shown on plans. Pumps shall be MEPCO close coupled, single-stage, inline design, capable of being serviced without disturbing piping. Pump volute shall be Class 30 cast iron and impeller shall be brass enclosed type, dynamically balanced.

Seal shaft shall be of rotary type and suitable for water temperatures up to 225 degrees Fahrenheit.

Pumps shall be rated for minimum of 175 psi working pressure. Casings shall have vent and drain ports at top and bottom of the casing.

Motor shall meet NEMA specifications and shall be of the size, voltage and enclosure called for on the plans. It shall have heavy-duty sealed ball bearings and stainless steel shaft.

Each pump shall be factory tested and thoroughly cleaned and painted with high-grade lacquer prior to shipment.

Each pump shall be checked by contractor and regulated for proper pressure, voltage and amperage draw. Data shall be noted on a tag or label and fastened to pump for owner's reference.



MARSHALL ENGINEERED PRODUCTS CO.